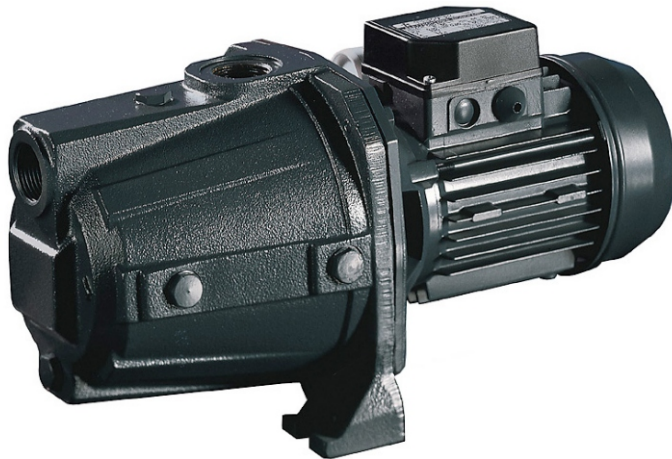




Model AGA, AGC

Cast Iron Jet Pumps



Specifications

Maximum working pressure : 10 bar (6 Bar AGA 1.00)
 Maximum liquid temperature: 45°C

Materials

Pump casing: Cast Iron
 Impeller: Noryl (AGA 1.00), Brass (AGA 1.50, AGC 2.00)
 Shaft : AISI 416 (AGA 1.00), AISI 303 (AGA 1.50, AGC 2.00)
 Bracket: Alum.(AGA 1.00), Cast Iron (AGA 1.50, AGC 2.00)
 Mechanical seal: Carbon/Ceramic/NBR

Technical Data

TEFC, 2 pole motor
 Insulation class F
 IP44 protection
 1Ø, 240 Volt, 50 Hz
 Permanent split capacitor
 Automatic thermal overload protection

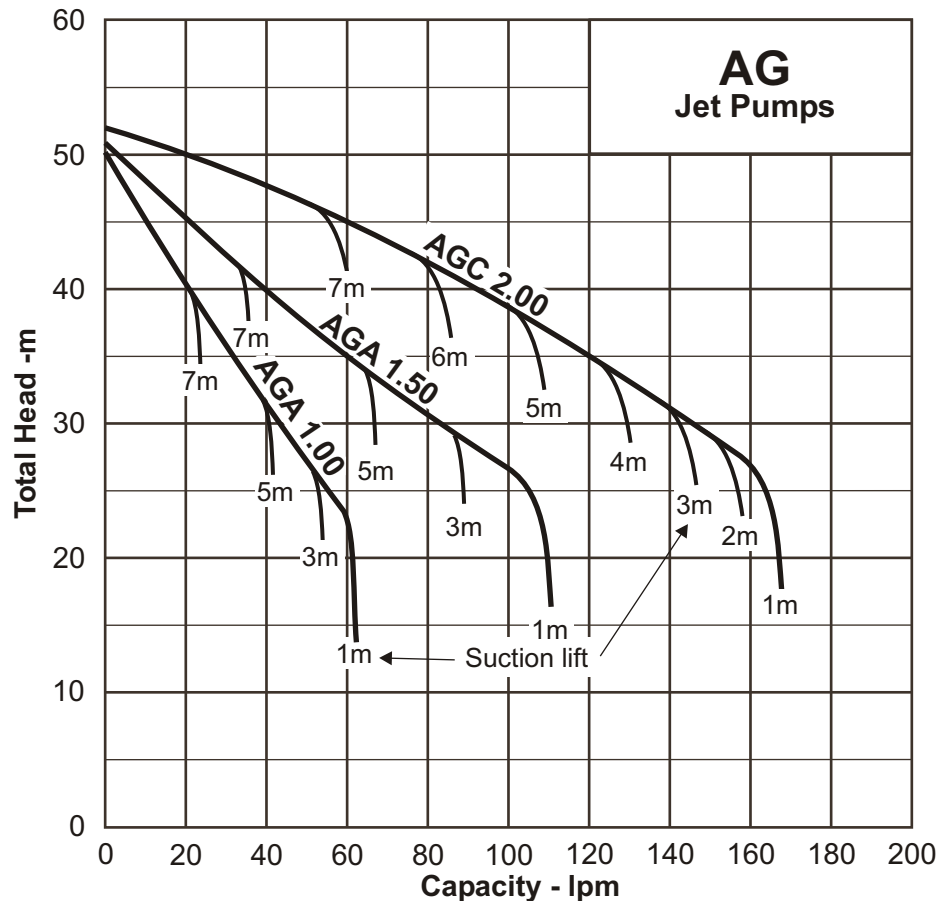
Self priming jet pumps manufactured in cast iron.
 Suitable for boosting or transfer of water, small scale irrigation, tank & pool emptying, etc.

Performance Curve

Synchronous Speed:
3000 r.p.m.

Water temp:
20°C

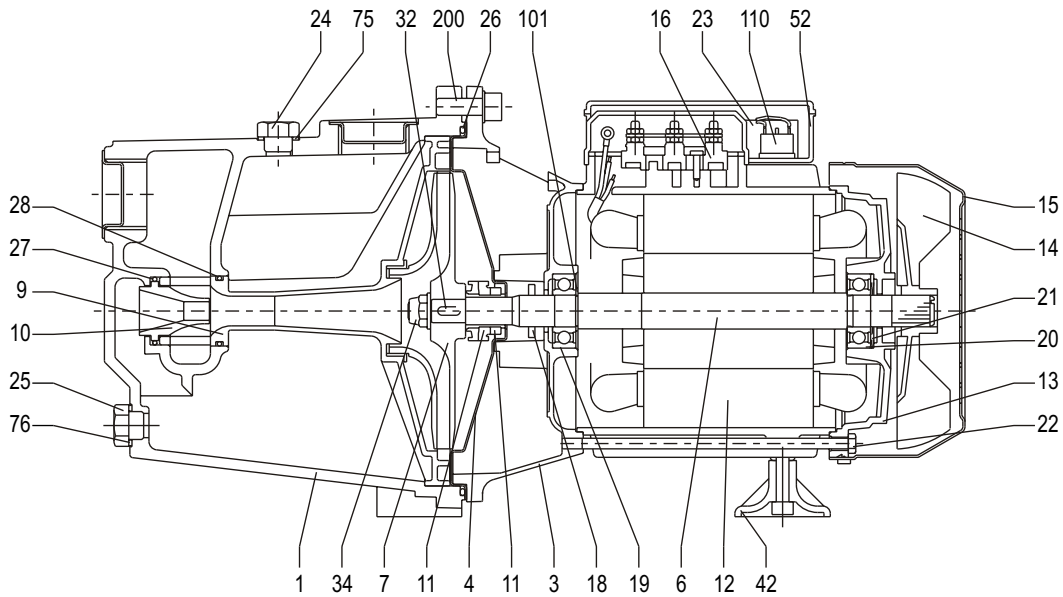
Applicable standard of test :
ISO 2458 Class C



Performance Table

Pump Model	Motor Output	Power Supply	Capacitor		Full Load Current	Q= Capacity - litres/min										
			µF	Vc		10	20	30	40	50	60	80	100	130	160	
						H=Total Head - metres (m)										
AGA 1.00 M	0.75 kW	240 V, 1ph.	20 µF	450 Vc	5.5 A	45	40.3	35.7	31.1	27	23					
AGA 1.50 M	1.1 kW	240 V, 1ph.	35 µF	450 Vc	8.1 A	48	45.1	42.4	40.0	37.4	35.1	30.8	27.0			
AGC 2.00 M	1.5 kW	240 V, 1ph.	40 µF	450 Vc	10.5 A	51	49.9	48.8	47.3	46.3	44.9	42	38.7	33.2	27	

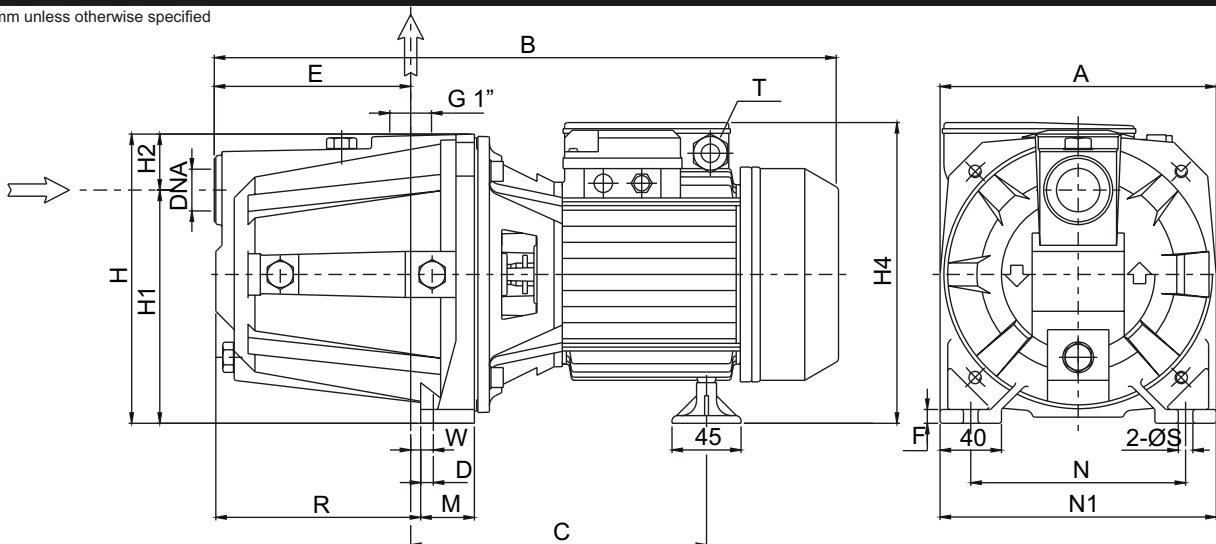
Sectional Drawing



No.	Part name	Material		Qty	No.	Part name	Material		Qty	No.	Part name	Material		Qty
		AGA 1.00M	AGA 1.50M AGC 2.00M				AGA 1.00M	AGA 1.50M AGC 2.00M				AGA 1.00M	AGA 1.50M AGC 2.00M	
1	Casing	Cast Iron		1	15	Fan Cover	Fe P04 Zinced		1	27	O-ring	NBR		1
3	Motor Bracket	Alum.	Cast Iron	1	16	Terminal block	-		1	28	O-ring	NBR		1
4	Casing Cover	AISI 304		1	18	Splash ring	NBR		1	32	Key		AISI 304	1
6	Shaft with rotor	AISI 416	AISI 303	1	19	Pump side bearing	Sealed ball		1	34	Impeller nut		AISI 304	1
7	Impeller	Noryl	Brass	1	20	Fan side bearing	Sealed ball		1	42	Foot	PVC		1
9	Diffuser & Venturi tube	Noryl		1	21	Adjusting ring	Steel C70		1	52	Terminal box	Polypropylene		1
10	Venturi Nozzle	Noryl		1	22	Tie rod	Fe 42 Zinced		4	75	Washer	Aluminium		1
11	Mechanical Seal	Car/Cer/NBR		1	23	Capacitor	-		1	76	Washer	Aluminium		1
12	Motor frame & stator	-		1	24	Priming plug	Brass		1	101	Seeger ring	AISI 420		1
13	Motor Cover	Aluminium		1	25	Drain plug	Brass		1	110	Protector		-	1
14	Fan	Polypropylene		1	26	O-ring	NBR		1	200	Screw	S Steel		4

Dimensions

Units: mm unless otherwise specified



	A	B	C	D	E	F	H	H1	H2	H4	M	N	N1	R	T	W	S	DNA	Weight
AGA 1.00 M	180	405	195	10.3	127	9	185	152	33	199	40	140	180	128.5	PG11	11.8	9.5	1"	14 kg
AGA 1.50 M	220	495	244	10	157	10	223	170	53	247	48	180	220	167.5	PG13.5	15.5	9	1 1/2"	26 kg
AGC 2.00 M	220	508	244	10	157	10	223	170	53	247	48	180	220	167.5	PG13.5	15.5	9	1 1/2"	27 kg

Specifications subject to change without notice