



# Stainless Steel Pumps

# Model CD Centrifugal Pumps



Stainless steel single impeller centrifugal pumps. Featuring the one piece volute manufactured using Ebara's unique plasma stamping process.

### Specifications

Maximum working pressure : 8 bar  
 Maximum liquid temperature: 60°C (for models 70/05-70/07-90/10)  
 90°C (for other models)

### Materials

Pump casing: 304 Stainless Steel  
 Impeller: 304 Stainless Steel  
 Casing Cover: 304 Stainless Steel  
 Shaft : 303 Stainless Steel  
 Bracket & Motor Shroud: 304 Stainless Steel  
 Mechanical seal: Carbon/Ceramic/NBR

### Motor Data

TEFC, 2 pole motor  
 Insulation class F  
 IP55 protection  
 50 Hz, 3 phase - 415 Volt, 1 phase - 240 Volt  
 In built overload protection for 1 phase

### Range

0.37 to 1.5 kW - 1 phase  
 0.37 to 1.8 kW - 3 phase

### Supply

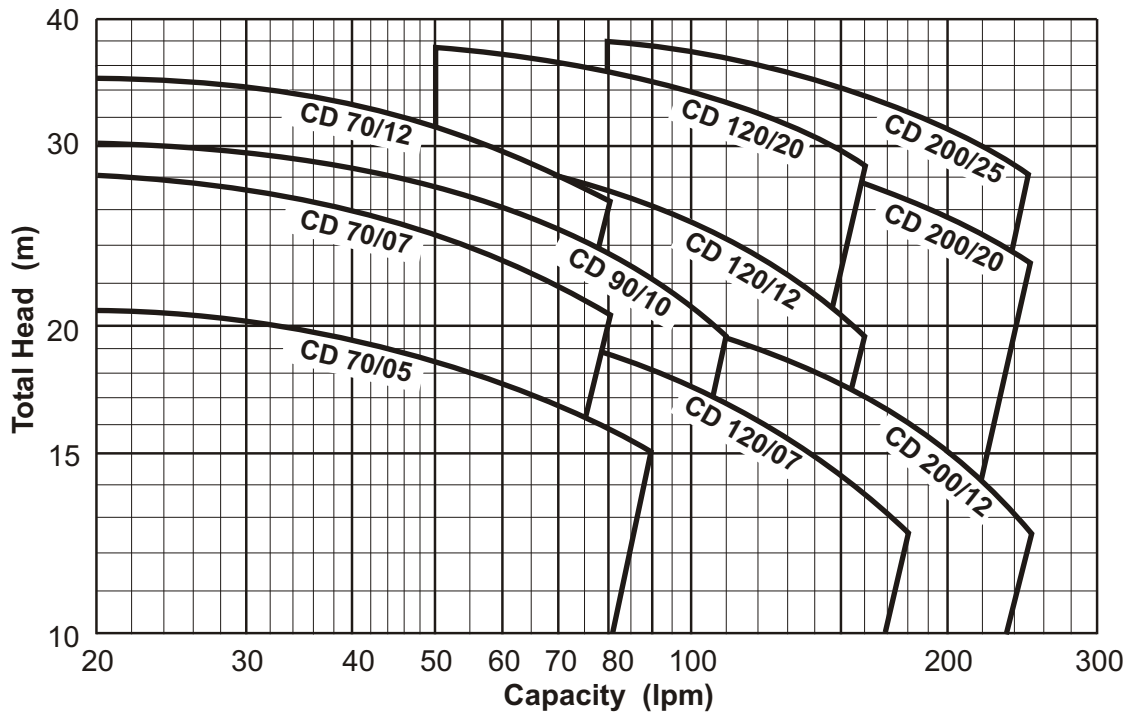
1.5 m cable & plug with 1 phase models  
 Optional high temperature seal available (110°C)  
 Optional hard faced seal available

### Performance Curve

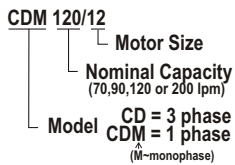
Synchronous Speed:  
 3000 r.p.m.

Water temp:  
 20°C

Applicable standard of test :  
 ISO 2458 Class C



### Model Code

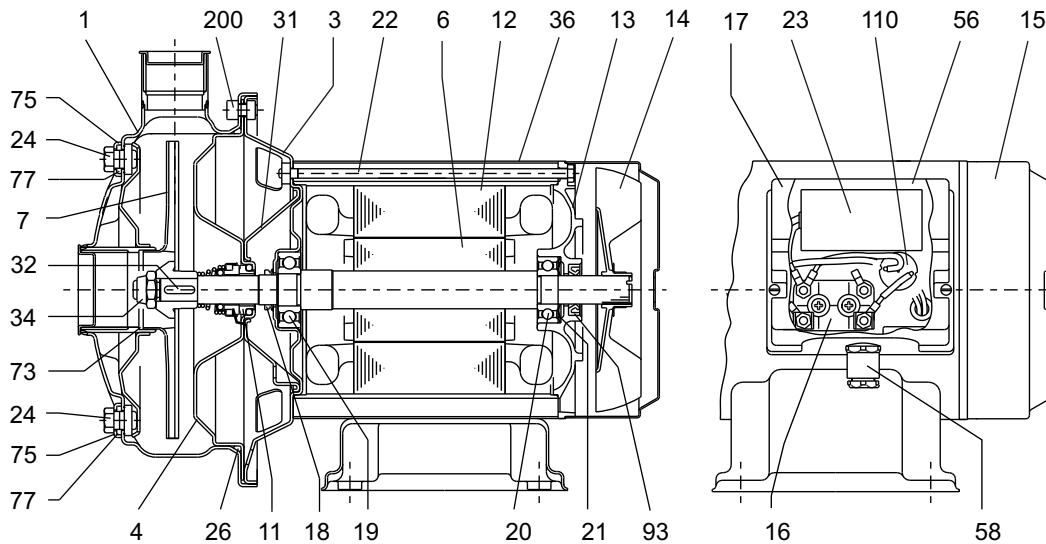


### Performance Table

Pump Model	Motor Output	Discharge/Suction Ø mm	Full Load Current		Capacitor (1Phase models only)	Q= Capacity - litres/min														
			1 Phase 240 V, 1ph.	3 Phase 415 V, 3ph.		20	50	80	90	110	130	160	180	210	250					
						H=Total Head - metres (m)														
CDM/CD 70/05	0.37 kW	25 / 32 mm	3.1 A	1.4 A	12.5 µF	20.7	18.4	15.9	15											
CDM/CD 70/07	0.55 kW	25 / 32 mm	4.6 A	2.0 A	16 µF	28	24.5	20.5												
CDM/CD 70/12	0.9 kW	25 / 32 mm	6.5 A	2.9 A	31.5 µF	35	31.2	26.5												
CDM/CD 90/10	0.75 kW	25 / 32 mm	5.6 A	2.3 A	20 µF	30.3	27.2	23.6	22.3	19.5										
CDM/CD 120/07	0.55 kW	25 / 32 mm	4.6 A	1.9 A	16 µF		20.5	18.7	18.1	16.8	15.5	13.7	12.5							
CDM/CD 120/12	0.9 kW	25 / 32 mm	6.9 A	2.8 A	31.5 µF		29.5	27.1	26.1	24.3	22.4	19.5								
CDM/CD 120/20	1.5 kW	25 / 32 mm	9.7 A	4.0 A	40 µF		37.5	35.3	34.6	33.1	31.4	28.6								
CDM/CD 200/12	0.9 kW	25 / 40 mm	6.3 A	2.7 A	31.5 µF			20.6	20.2	19.5	18.5	17.1	16.1	14.6	12.5					
CDM/CD 200/20	1.5 kW	25 / 40 mm	9.8 A	4.0 A	40 µF			31	30.6	29.7	28.9	27.5	26.6	25.1	23					
CD 200/25	1.8 kW	25 / 40 mm	N/A	5.0 A	N/A			38	37.5	36.4	35.3	33.6	32.4	30.5	28					

# Sectional Drawing

Model **CD**



Note: External Capacitor on CDM 120/20 & CDM 200/20

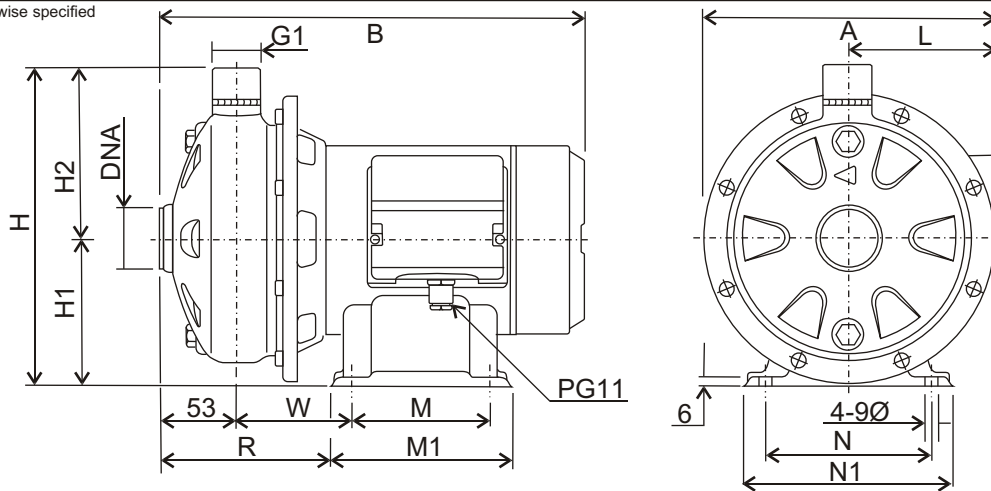
(1) - Single Phase Only  
(2) - 70/05, 70/07, 90/10 Only

No.	PART NAME	MATERIAL	QTY	No.	PART NAME	MATERIAL	QTY	No.	PART NAME	MATERIAL	QTY
1	Casing	AISI 304	1	17	Terminal box cover	Polyamide	1	34	Impeller nut	AISI 304	1
3	Motor bracket	AISI 304	1	18	'V' seal ring	NBR	1	36	External motor casing	AISI 304	1
4	Casing cover	AISI 304	1	19	Pump side ball bearing	-	1	56	Box gasket	NBR	1
6	Shaft with rotor	AISI 304 (In contact with liquid)	1	20	Fan side ball bearing	-	1	58	Cable entry	-	1
7	Impeller	AISI 304	1	21	Adjusting ring	Steel C70	1	73	Casing ring (2)	AISI 304	1
11	Mechanical seal	Ceramic/Carbon/NBR	1	22	Tie rod	Fe 42 Zinc	4	75	Washer	AISI 304	2
12	Motor frame with stator	-	1	23	Capacitor (1)	-	1	77	O-ring	NBR	2
13	Motor cover	Aluminium	1	24	Priming/Drain plug	AISI 303	2	93	Lip seal	NBR	1
14	Fan	Polypropylene	1	26	O-ring	NBR	1	110	Protector (1)	-	1
15	Fan cover	AISI 304	1	31	Thrust flange	AISI 304	1	200	Screw	Stainless steel A2 UN17323	8
16	Terminal box	-	1	32	Key	AISI 304	1	-	-	-	-

# Dimensions

Model **CD**

Units: mm unless otherwise specified



(1) - Three Phase models (2) - Single Phase models

Model	A		B	H	H1	H2	L		M	M1	N	N1	R	W	DNA
	1	2					1	2							
CDM/CD 70/05	206	210	298	229	106	123	102	106	100	130	120	150	101	63	G1 ¼
CDM/CD 70/07	206	210	298	229	106	123	102	106	100	130	120	150	101	63	G1 ¼
CDM/CD 70/12	218	218	328	250	118	132	102	102	100	130	120	150	131	93	G1 ¼
CDM/CD 90/10	206	210	328	229	106	123	102	106	100	130	120	150	131	93	G1 ¼
CDM/CD 120/07	206	210	298	229	106	123	102	106	100	130	120	150	101	63	G1 ¼
CDM/CD 120/12	206	206	328	229	106	123	102	102	100	130	120	150	101	63	G1 ¼
CDM/CD 120/20	226	226	356	250	118	132	110	110	100	130	120	150	131	93	G1 ¼
CDM/CD 200/12	206	206	328	229	106	123	102	102	100	130	120	150	131	93	G1 ½
CDM/CD 200/20	214	214	356	229	106	123	110	110	120	150	140	170	133	95	G1 ½
CD 200/25	226	-	366	250	118	132	110	-	120	150	140	170	138	100	G1 ½

Specifications subject to change without notice



**EBARA**

EBARA PUMPS Australia Pty. Ltd

Data Sheet

CD 07-07