



Model **CMA, CMB** Single Impeller Cast Iron Pumps



Single Impeller centrifugal pumps manufactured in cast iron. Suitable for boosting or transfer of water, small scale irrigation, etc.

Specifications

Maximum working pressure : 6 bar
Maximum liquid temperature: 40°C (CMA),
90°C (CMB)

Materials

Pump casing: Cast Iron
Impeller: Noryl (CMA), Cast Iron (CMB 1.50), Brass (CMB 2.00)
Shaft : AISI 416 (CMA), AISI 303 (CMB)
Bracket: Aluminium (CMA, CMB 1.50), Cast Iron (CMB 2.00)
Mechanical seal: Carbon/Ceramic/NBR

Technical Data

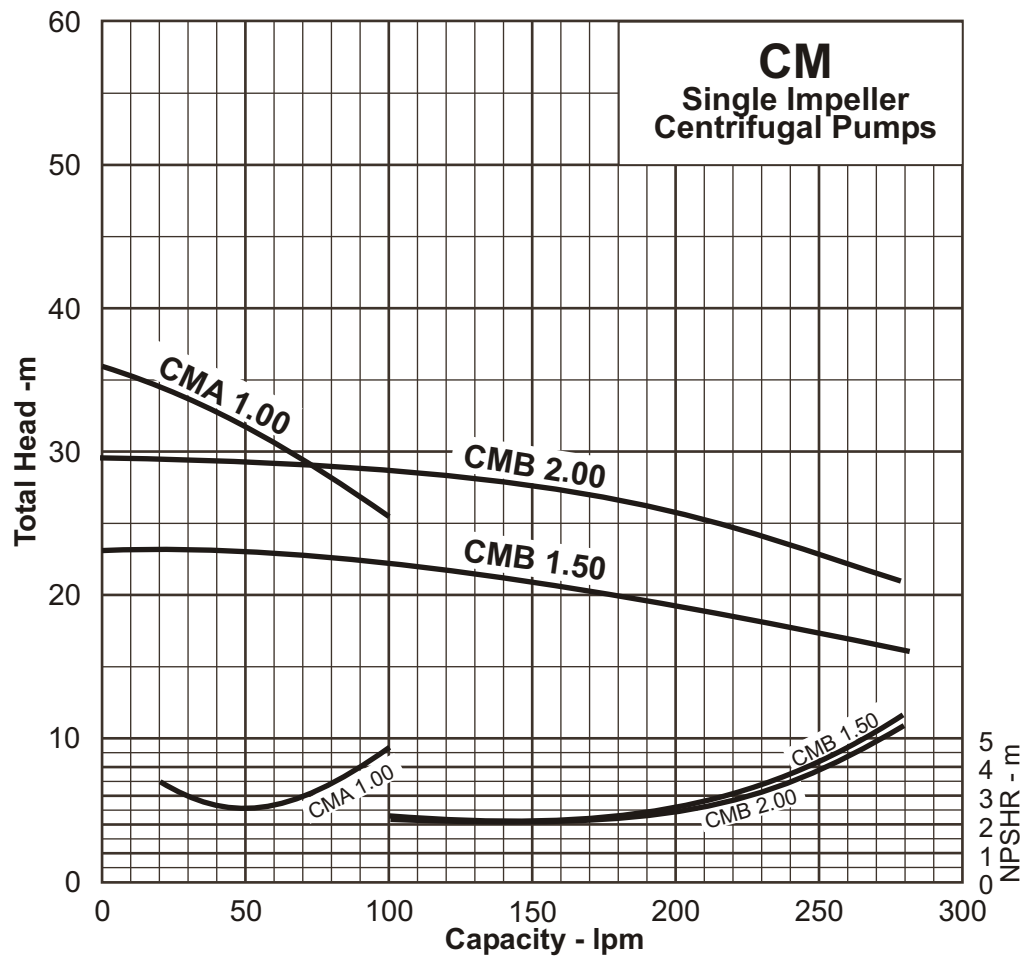
TEFC, 2 pole motor
Insulation class F
IP44 protection
1Ø, 240 Volt, 50 Hz
Permanent split capacitor
Automatic thermal overload protection

Performance Curve

Synchronous Speed:
3000 r.p.m.

Water temp:
20°C

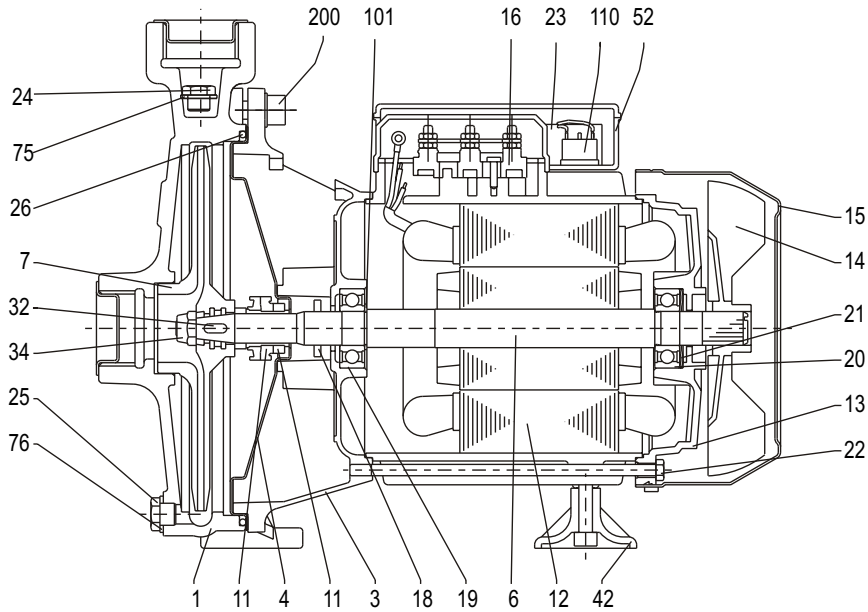
Applicable standard of test :
ISO 2458 Class C



Performance Table

Pump Model	Motor Output	Power Supply	Capacitor		Full Load Current	Q= Capacity - litres/min										
			µF	Vc		H=Total Head - metres (m)										
CMA 1.00 M	0.75 kW	240 V, 1ph.	20 µF	450 Vc	6.2 A	34.5	32.8	30.6	28.2	25.5						
CMB 1.50 M	1.1 kW	240 V, 1ph.	31.5 µF	450 Vc	8.5 A					22.4	21.1	19.8	18	17.1	16	
CMB 2.00 M	1.5 kW	240 V, 1ph.	40 µF	450 Vc	10.8 A					28.7	27.7	26.3	24.5	22.8	21	

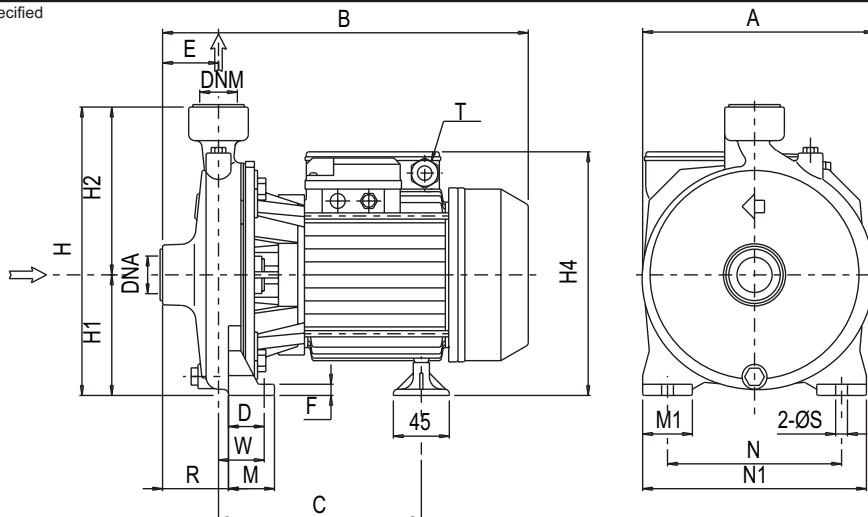
Sectional Drawing



No.	Part name	Material			Qty	No.	Part name	Material			Qty	No.	Part name	Material			Qty
		CMA 1.00M	CMB 1.50M	CMB 2.00M				CMA 1.00M	CMB 1.50M	CMB 2.00M				CMA 1.00M	CMB 1.50M	CMB 2.00M	
1	Casing	Cast Iron			1	16	Terminal block	-			1	32	Key	AISI 304			1
3	Motor Bracket	Alum	Cast Iron		1	18	Splash ring	NBR			1	34	Impeller nut	AISI 304			1
4	Casing Cover	AISI 304			1	19	Pump side bearing	Sealed ball			1	42	Foot	PVC			1
6	Shaft with rotor	AISI 416	AISI 303		1	20	Fan side bearing	Sealed ball			1	52	Terminal box	Polypropylene			1
7	Impeller	Noryl	Cast Iron	Brass	1	21	Adjusting ring	Steel C70			1	75	Washer	Aluminium			1
11	Mechanical Seal	Car/Cer/NBR			1	22	Tie rod	Fe 42 Zinced			4	76	Washer	Aluminium			1
12	Motor frame & stator	-			1	23	Capacitor	-			1	101	Seeger ring	AISI 420			1
13	Motor Cover	Aluminium			1	24	Priming plug	Brass			1	110	Protector	-			1
14	Fan	Polypropylene			1	25	Drain plug	Brass			1	200	Screw	S Steel			4
15	Fan Cover	Fe P04 Zinced			1	26	O-ring	NBR			1						

Dimensions

Units: mm unless otherwise specified



	A	B	C	D	E	F	H	H1	H2	H4	M	M1	N	N1	R	T	W	S	DNA	DNM	Weight
CMA 1.00 M	185	300.3	171.8	36.8	45	9	232	97	135	198	45	40	140	180	45	PG11	36.8	9.5	1"	1"	12.0 kg
CMB 1.50 M	188	349.3	206.3	36.8	49.5	9	251.5	101.5	150	233.5	45	40	140	180	65.5	PG11	52.8	9.5	2"	1 1/4"	20.5 kg
CMB 2.00 M	200	373.3	209.3	36.8	57.5	9	271.5	111.5	160	243.5	45	40	160	200	76.5	PG11	55.8	9.5	2"	1 1/4"	21.5 kg

Specifications subject to change without notice



EBARA

EBARA PUMPS Australia Pty. Ltd

Data Sheet

CMA/B 06-09