



DELATITE™ VALVES



“Not Just Tight Shut Off.....Very Tight Shut Off!”

The Latest Technology in Severe Service Ball Valves

- Zero Leakage
- High Pressure
- High Temperature
- Metal Seated
- Repairable



Model APV-LLK

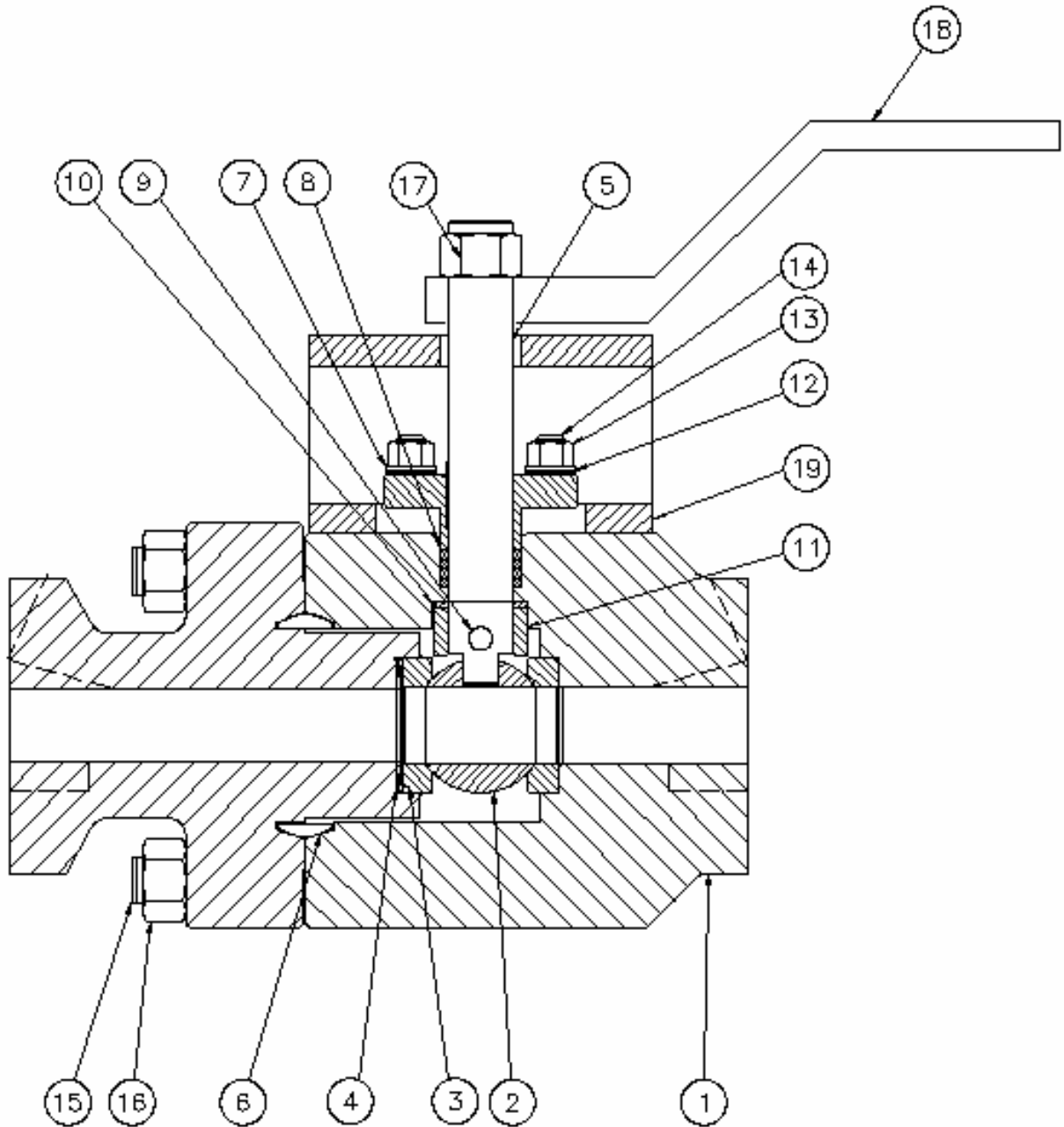
Metal Seated Ball Valves for:

- Demanding
- High Pressure
- High Temperature
- Power Industry

Typical Applications:

- Turbine Drains
- Boiler Drains
- Super Heater Drains
- Feed Water Drains
- Steam Drum Vents
- Water Column Block Valves
- Boiler Vents
- Spray Water
- Continuous Blow-Down
- Valve Bypass
- Main Steam Start-Up
- Turbine Vents
- Main Isolation Valves
- Superheater Vents

The Latest Technology In High Pressure Ball Valves.





Bills of Material

<i>Item</i>	<i>Description</i>	<i>Material</i>
1	Body	A182-F22
2	Ball	431SS Coating (LLK 1906)
3	Seat	431SS Coating (LLK 1906)
4	Spring	Inconel 718
5	Stem	431SS
6	Body Gasket	AS2637-1986-630
7	Packing Flange	316SS
8	Packing	Grafoil SS Reinforced
9	Pin	Inconel 718
10	Thrust Washer	410SS/CCC
11	Stem Bearing	431SS
12	Live Load Spring	17-4PH
13	Packing Gland Stud	A193-GR8
14	Packing Gland Nut	A194-GR.4H
15	Body Stud	A193-B16
16	Body Nut	A194-GR.4H
17	Handle Nut	A194-GR.4H
18	Handle	Carbon Steel
19	Bracket	Carbon Steel

<i>Item</i>	<i>Description</i>	<i>Material</i>
1	Body	A105
2	Ball	431SS Coating (LLK 1906)
3	Seat	431SS Coating (LLK 1906)
4	Spring	Inconel 718
5	Stem	431SS
6	Body Gasket	AS2637-1986-630
7	Packing Flange	316SS
8	Packing	Grafoil SS Reinforced
9	Pin	Inconel 718
10	Thrust Washer	410SS/CCC
11	Stem Bearing	431SS
12	Live Load Spring	17-4PH
13	Packing Gland Stud	A193-GR8
14	Packing Gland Nut	A194-GR.4H
15	Body Stud	A193-B16
16	Body Nut	A194-GR.4H
17	Handle Nut	A194-GR.4H
18	Handle	Carbon Steel
19	Bracket	Carbon Steel

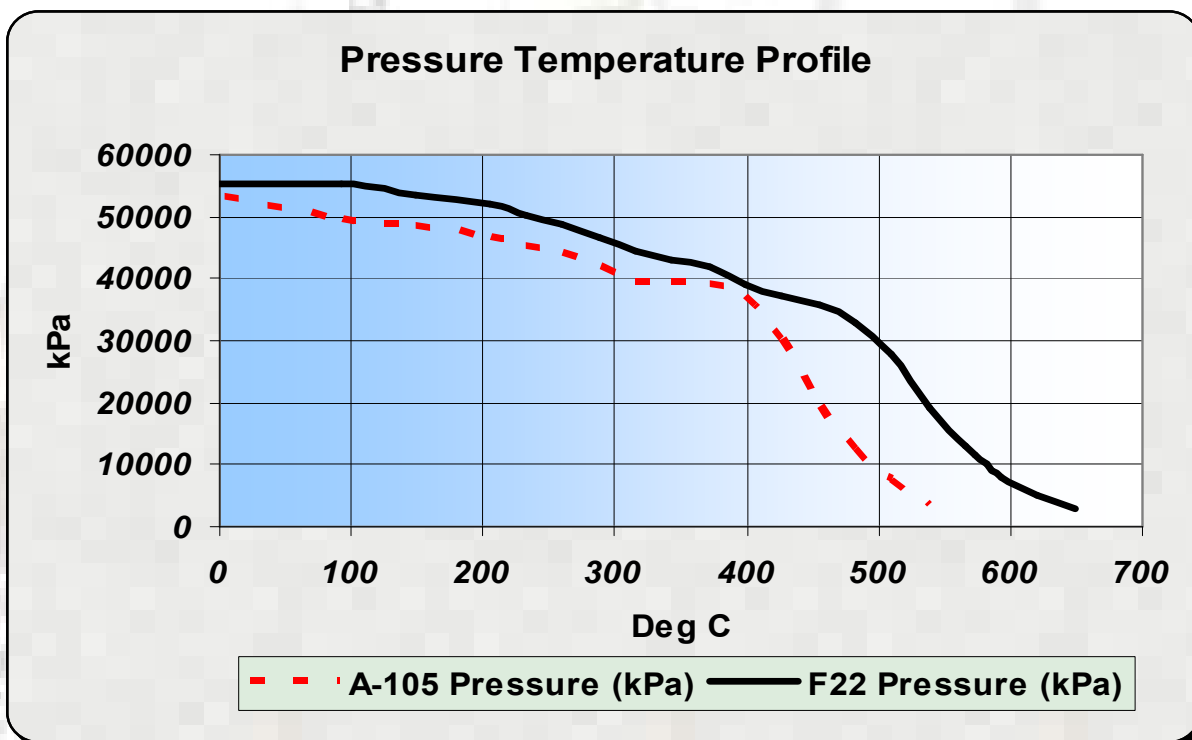


Pressure—Temperature Ratings

Material A105 - Class 3200 #			
Temperature		Pressure	
Deg C	Deg F	kPa	PSI
-29	-20	54475	7901
93	200	49622	7197
149	300	48263	7000
204	400	46609	6760
232	450	45326	6574
260	500	44037	6387
288	550	41824	6066
316	600	39562	5738
343	650	39493	5728
371	700	39183	5683
399	750	37066	5376
427	800	30261	4389
454	850	19671	2853
482	900	12611	1829
510	950	7577	1099
538	1000	3785	549
566	1050		
573	1064		
582	1080		
593	1100		
621	1150		
649	1200		

Material F22 - Class 3200 #			
Temperature		Pressure	
Deg C	Deg F	kPa	PSI
-29	-20	55158	8000
93	200	55158	8000
149	300	53558	7768
204	400	51904	7528
232	450	50380	7307
260	500	48870	7088
288	550	46678	6770
316	600	44478	6451
343	650	43140	6257
371	700	41755	6056
399	750	39086	5669
427	800	37321	5413
454	850	35818	5195
482	900	33040	4792
510	950	27765	4027
538	1000	19174	2781
566	1050	12873	1867
573	1064	11528	1672
582	1080	9991	1449
593	1100	8074	1171
621	1150	5054	733
649	1200	3013	437

Material pressure - temperature ratings per ASME/ANSI B16-34-1988;
 Standard Class Interpolated Ratings
 A-105 is not recommended for prolonged use above 427 Deg C (800 Deg F)



Features

- Rating: ANSI 3200# for all valves
- 3 Basic Valve Sizes to cover 1/2" - 4" Valves
- End Connections
- Butt Weld, Socket Weld, Threaded, Flanged and Special End Connections.
- Sealing Surfaces Coated with Carbide
(Coating applied using the latest HVOF Technology)
- Blow-out Proof Stem
- Forged Body
- Seat Faces are outside the Flow Path.
- Repairable (Replaceable Seats and Trim)
- Valves are available in Special Alloys
- Four Die Formed Packing Rings
- All Valves have a unique Serial Number
- Material Certificates for all pressure containing parts are Supplied and Maintained
- Seat leakage Test
- Conform to MSS SP.61
- Valve can be Fitted with Pneumatic Hydraulic and Electric Actuators,
- Lever Operators and Gear Operators
- Repair Facilities are Available

Delatite Valves are dedicated to providing High Quality Products of Superior Design which are all supported by excellent customer service.

Delatite are Committed to solving Severe Service Valve problems in today's industries.

Total Quality Management is our Commitment to our Customers.

We go out of our way to understand the Customers needs and to provide solutions which meet or exceed our customers' needs.

This commitment is carried across all departments of the company. Including

- Sales
- Engineering
- Product Development

This Commits Delatite to ongoing quality and performance improvements to meet our customers needs.

We aim to meet our Customers Needs First Time and on Time.

Valves have been designed to meet the ANSI Standards for Valves.

Valve are Tested to conform with MSS SP.61

All machining, hard coating, assembly, and repair facilities are accredited to ISO 9001 : 2000

Repair facilities are ISO 9001 : 2000

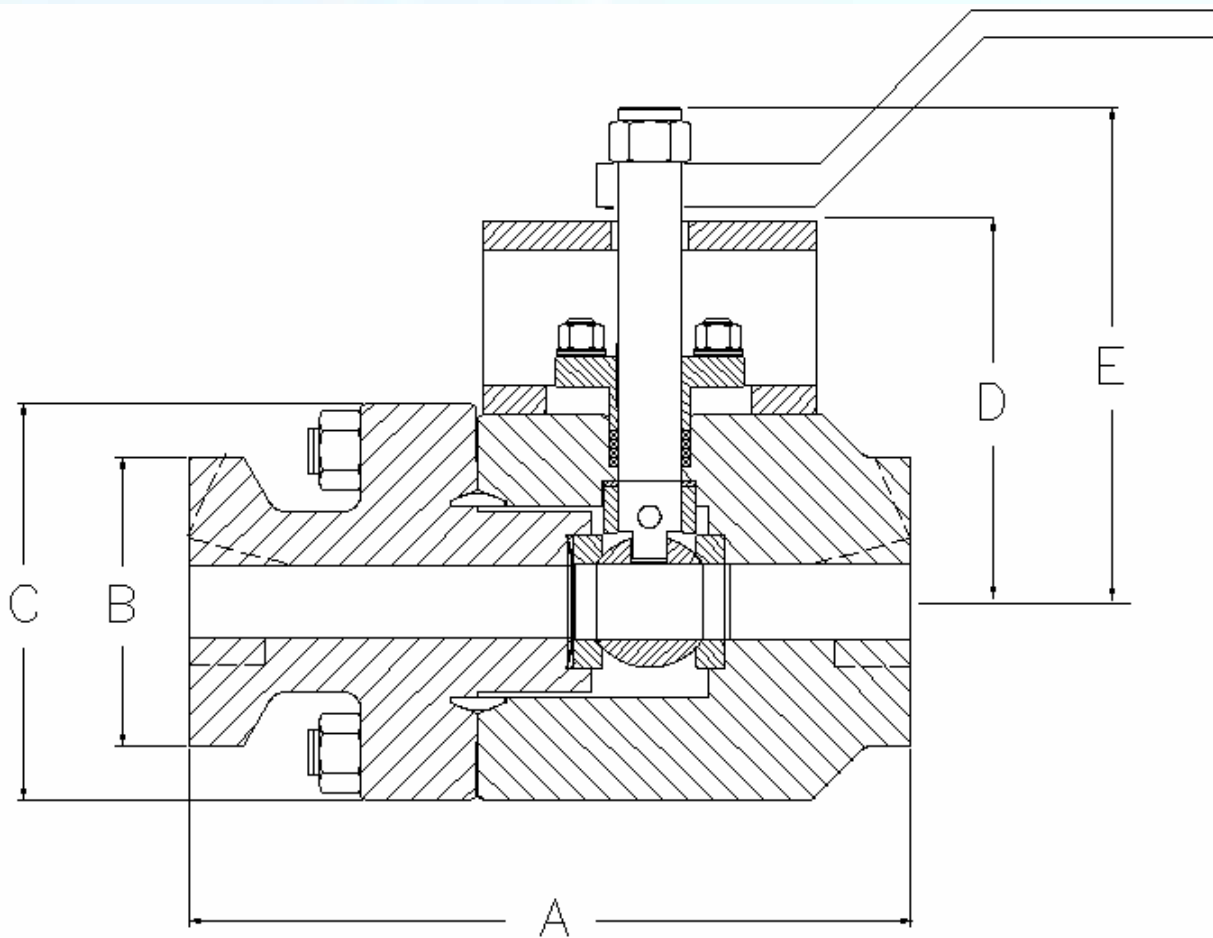
Certificate No QEC 2420

Pressure test equipment traceable to NATA.



A batch of APV-LLK ball valves being prepared for shipment to customer.

Dimensional Data



Nominal Size		(mm)					End Connections	Bore Size
(mm)	(inches)	A	B	C	D	E		(mm)
13	0.5	216	49	114	127	148	SW, BW, NPT, Flanged	17
20	0.75	216	49	114	127	148	SW, BW, NPT, Flanged	17
25	1.0	216	49	114	127	148	SW, BW, NPT, Flanged	17
32	1.25	216	49	114	127	148	SW, BW, NPT, Flanged	17
38	1.5	216	49	114	127	148	SW, BW, NPT, Flanged	17
*50	2	279	73	146	168	192	SW, BW, NPT, Flanged	25
*65	2.5	279	73	146	168	192	BW, Flanged	25
80	3	258	114	178	185	220	BW, Flanged	45
100	4	258	114	178	185	220	BW, Flanged	45

* Note: Socket weld option add 25mm to dimension A



Valve Model - Coding Number

APV - LLK - A182-F22 - 25 - BW

Model
APV-LLK

Body Material
A182-F22
A182-F316
A105

Size (mm)
12
20
25
32
40
50
65
80
100

End Connections
BW = Butt Weld
SW = Socket Weld
RF = R.F. Flange
NPT = Threaded NPT
BSW = Threaded BSW
HE = Hub Ends

The information and specification in this publication are presented for information purposes only. While every effort has been made to ensure accuracy they should not be considered as certified information. Delatite Valves are continually improving the performance of their range of valves. Information in this brochure is subject to change without notice.

For further information or verification please contact your Delatite Valve Representative

Manufactured in Australia by:
Delatite Valves Pty Ltd
Victoria
Australia
sales@delatitevalves.com
www.delatitevalves.com

Authorised Distributor





DELATITE™ VALVES

