



Self priming jet pumps manufactured in stainless steel. Suitable for boosting or transfer of water, small scale irrigation, tank & pool emptying, etc.

Specifications

Maximum working pressure : 6 bar
Maximum liquid temperature: 60°C

Materials

Pump casing: 304 Stainless Steel
Impeller: 304 Stainless Steel
Jet & Diffuser: Noryl
Shaft : AISI 303 (in contact with liquid)
Bracket: 304 Stainless Steel
Motor Shroud & Fan Cover: 304 Stainless Steel
Mechanical Seal: Carbon/Ceramic/NBR

Technical Data

TEFC, 2 pole motor
Insulation class F
IP54 protection
1Ø, 240 Volt, 50 Hz
Permanent split capacitor
Automatic thermal overload protection

Supply

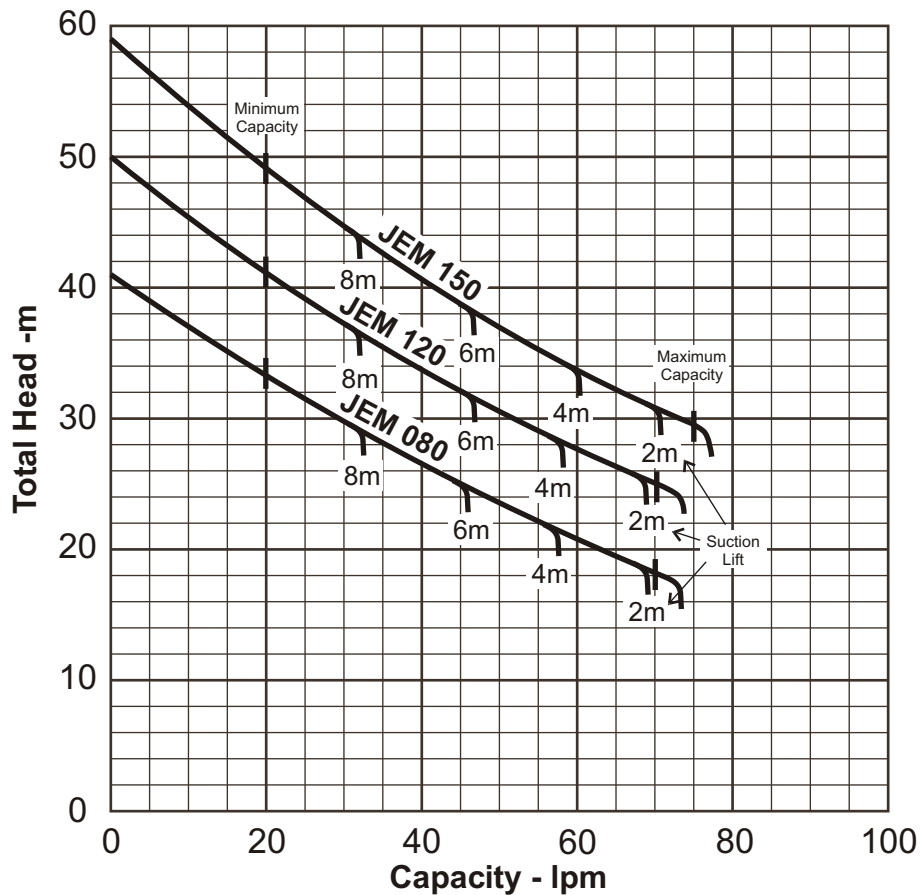
1.5 m cable with 3 pin plug
Available as pressure system with pressure switch or Presscontrol

Performance Curve

Synchronous Speed:
3000 r.p.m.

Water temp:
20°C

Applicable standard of test :
ISO 2458 Class C

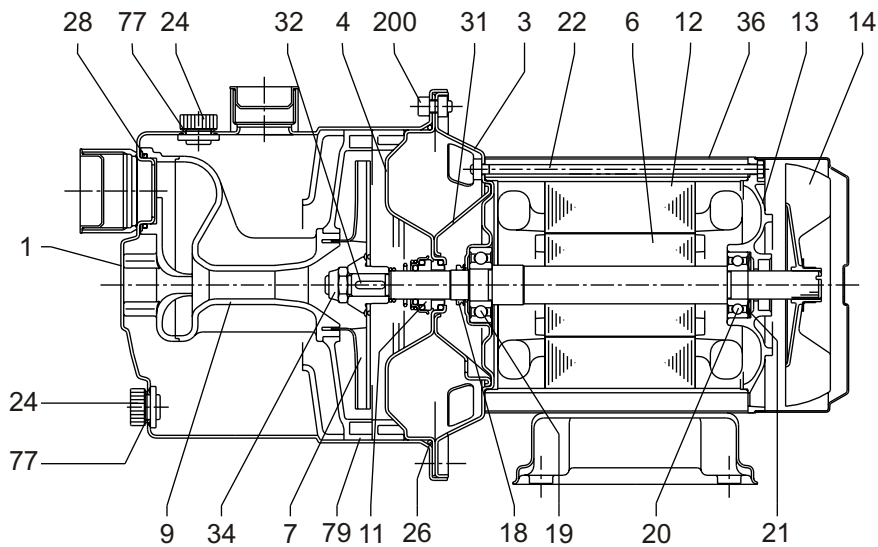


Performance Table

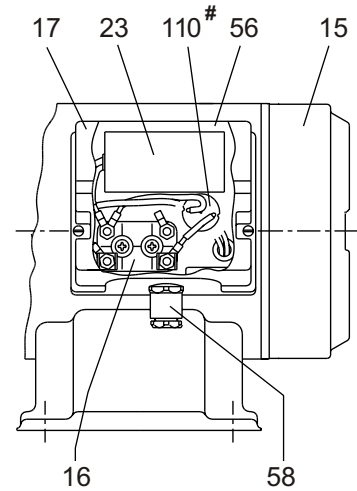
Pump Model	Motor Output	Power Supply	Capacitor		Full Load Current	Q= Capacity - litres/min								
			µF	Vc		20	30	40	50	60	70	75		
JEM 080	0.60 kW	240 V, 1ph.	16 µF	450 Vc	4.7 A	33	29	26.5	23.5	20.5	18			
JEM 120	0.88 kW	240 V, 1ph.	20 µF	450 Vc	6.7 A	41	37	34	30.5	27.5	24.5			
JEM 150	1.10 kW	240 V, 1ph.	31.5 µF	450 Vc	7.6 A	49	44.5	40.5	37	34	31	29.5		

Sectional Drawing

Model JEM



110 - Protector - applies only to JEM 150

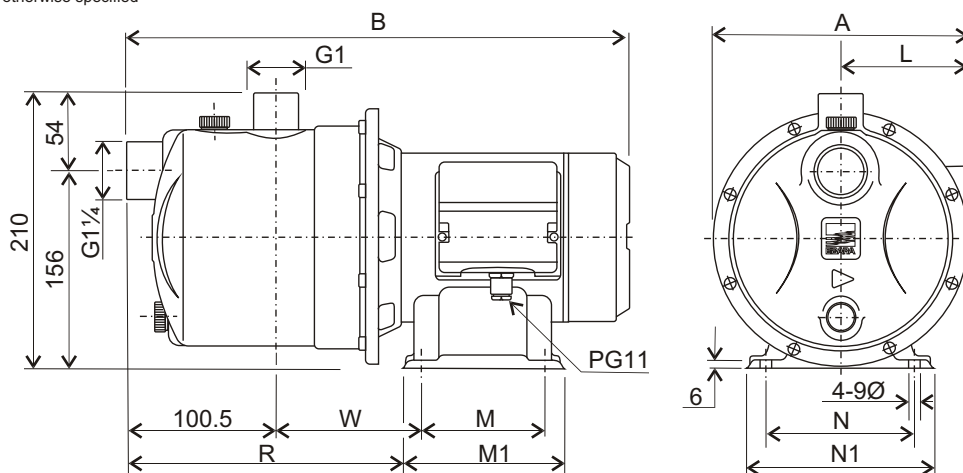


No.	PART NAME	MATERIAL	QTY	No.	PART NAME	MATERIAL	QTY
1	Casing	AISI 304 Stainless Steel	1	21	Adjusting ring	Steel S780	1
3	Motor bracket	Aluminium	1	22	Tie rod	Fe 42	4
4	Casing cover	AISI 304 Stainless Steel	1	23	Capacitor	-	1
6	Shaft with rotor	AISI 303 S/Steel (Part in contact with liquid)	1	24	Priming/Drain plug	Nylon	2
7	Impeller	AISI 304 Stainless Steel	1	26	O-ring	NBR	1
9	Diffuser Venturi tube	Noryl	1	28	O-ring	NBR	1
11	Mechanical seal	Carbon/Ceramic/NBR	1	31	Thrust flange	AISI 304 Stainless Steel	1
12	Motor frame with stator	-	1	32	Impeller Key	AISI 304 Stainless Steel	1
13	Motor cover	Aluminium	1	34	Impeller Nut	AISI 304 Stainless Steel	1
14	Fan	Polypropylene	1	36	Motor Shroud	AISI 304 Stainless Steel	1
15	Fan cover	Fe P04	1	56	Box gasket	NBR	1
16	Terminal block	-	1	58	Cable entry	-	1
17	Terminal box cover	ABS	1	77	O-ring	NBR	2
18	Splash ring	NBR	1	79	Space diffuser	Noryl	1
19	Pump side ball bearing	-	1	110	Motor protector	- (Only for JEM 150)	1
20	Fan side ball bearing	-	1	200	Screw	Stainless steel A2 UNI7323	8

Dimensions

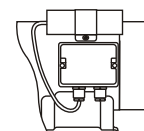
Model JEM

Units: mm unless otherwise specified



Model	Dimensions (mm)								
	A	B	L	M	M1	N	N1	R	W
JEM 080	209	401	105	100	130	120	150	213.5	128
JEM 120	209	432	105	100	130	120	150	228.5	143
JEM 150	214	439	110	120	150	140	170	231	145.5

Note: External Capacitor on JEM 150



Specifications subject to change without notice



EBARA

EBARA PUMPS Australia Pty. Ltd

Data Sheet

JEM 07-08